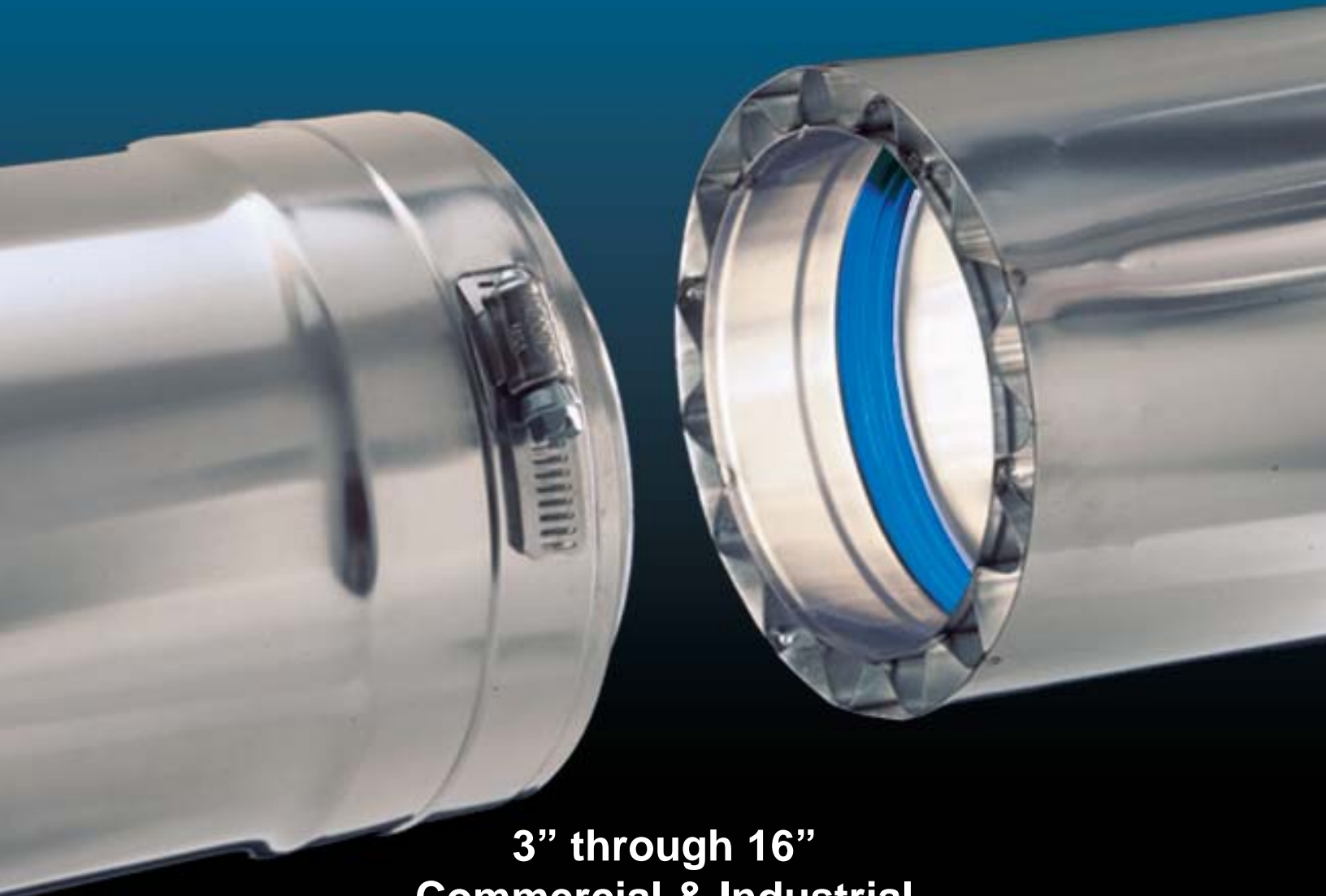




**PROTECH SYSTEMS, INC.**  
LEADERS IN VENTING TECHNOLOGY



**3" through 16"**

**Commercial & Industrial**

# **FasNSeal<sup>®</sup> W2**

Sets the standard yet again as the first  
**AL 29-4C Double Wall Vent System**  
with a built-in gasket, a mechanical locking band and  
featuring a full 1/2" air space for superior performance.

patent # 6,026,803  
additional patents pending



# FasNSeal®W2

## Material Selection and Design

The **FasNSeal®W2 Double Wall Special Gas Vent System** is manufactured under the most stringent quality control measures utilizing the latest production technology and know-how. FasNSeal®W2 is ideally suited for exhausting high efficiency; natural gas or propane fired heating equipment, where low flue gas temperatures can result in significant condensate formation within the vent system.

**The flue gas conduit** (inner tube) is made from AL29-4C or 29-4 (S44735), a super-ferritic stainless steel designed for extreme resistance to chloride ion pitting, crevice corrosion and stress corrosion cracking, as well as general corrosion in oxidizing and moderately reducing environments. AL29-4C is an ideal choice for resisting deleterious effects of corrosive condensates created by partially or fully condensing natural gas and propane fired heating appliances. The Canadian Gas Research Institute confirmed that test results proved AL29-4C to be one of two “most corrosion resistant alloys of twenty candidate stainless steels evaluated for resistance to chloride-induced corrosion in condensing and partially condensing gas-fired appliances”. AL29-4C is a registered trademark of Allegheny Ludlum Corp.



**The Jacket** (outer tube) is manufactured from type 304 or type 430 stainless steel to provide long lasting performance and stability inside a building or when exposed to the outdoors.

**The Air space** between the flue gas conduit and jacket is **.5 inches**, providing close clearances to combustibles, reasonable outside dimensions and an additional heat shield or margin of safety where needed.

**“The FasNSeal®W2 System is fully interchangeable with our FasNSeal® Single-wall System.”** See page 9 & 10 for adapter.

**FasNSeal®W2 has been tested and is listed by Underwriters Laboratories, Inc.** to UL 1738 and ULC-S636-95 safety standards. When installed according to ProTech Systems’ installation instructions, FasNSeal®W2 meets all test requirements for horizontal and vertical; interior or exterior installations.

### Clearance To Combustibles

Rated Operating Temperature, °F		Minimum Clearance Enclosed		Clearance Unenclosed	
		Horizontal	Vertical	Horizontal	Vertical
3" & 4"	300°F	3"	1"	1"	1"
	400°F	6"	1"	3"	1"
	480°F	6"	4"	3"	1"
5" - 16"	300°F	3"	1"	1"	1"
	400°F	6"	1"	3"	1"
	480°F	6"	6"	3"	3"

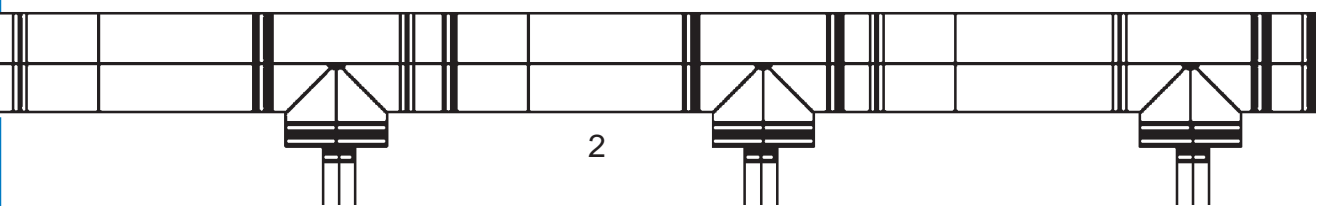
Rated Operating Temperature of 300°F = Max Flue Gas Temperature of 375°F  
 Rated Operating Temperature of 480°F = Max Flue Gas Temperature of 550°F

### Material Thickness

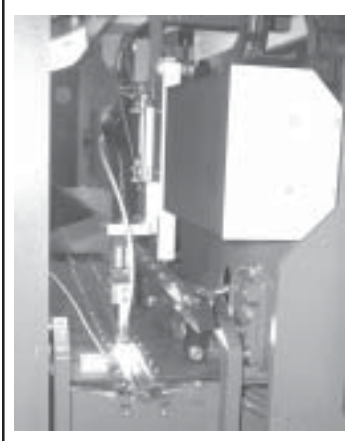
Inner Wall Material Thickness	
3" - 7" ( 76.2mm - 177.8)	.016" (.4mm)
8" - 12" (203.2mm - 304.8)	.019" (.5mm)
14" - 16" (355.6mm - 406.4)	.024 (.6mm)

Outer Wall Material Thickness	
3" - 6" ( 76.2mm - 152.4)	.016 (.4mm)
7" - 16" (177.8mm - 406.4)	.024 (.6mm)



## FasNSeal®W2 is a Heating Contractor's Dream Come True!



### FasNSeal®W2 Is Built For Performance

Proven in our single wall system since 1997, all FasNSeal® products feature a smooth weld seam inside and out that is completely shielded during the TIG welding process. Contamination or molecular changes in the weld seam are avoided; no fillers are used in the welding process. Tube ends are formed under the most stringent quality standards to guarantee a perfect fit every time and to avoid built-in stress points or weak areas.

### FasNSeal®W2 Applications

FasNSeal®W2 is a Special Gas Vent and Gas Vent Connector, designed for use on natural gas or propane-fired appliances listed as Category II, III and IV or in Canada Type BH Gas Vent Systems having a maximum operating temperature of 480 degrees F and maximum **rated positive pressure of 6" water column** (tested at 15" water column!). FasNSeal®W2 provides venting for high efficiency gas boilers, furnaces, booster heaters, pool heaters, water heaters, unit heaters or tankless water heaters and is available in 3" -10", 12", 14" and 16" nominal flue gas conduit diameters. FasNSeal®W2 may also be used as a vent for Category I, natural gas or propane-fired heaters. (See installation instructions for details). FasNSeal®W2 must be sized according to the heating appliance manufacturer's instructions, NFPA 211, NFPA 54, The National Fuel Gas Code ANSI Z223.1 and any other relevant local building codes and regulations (see installation instructions for details!).

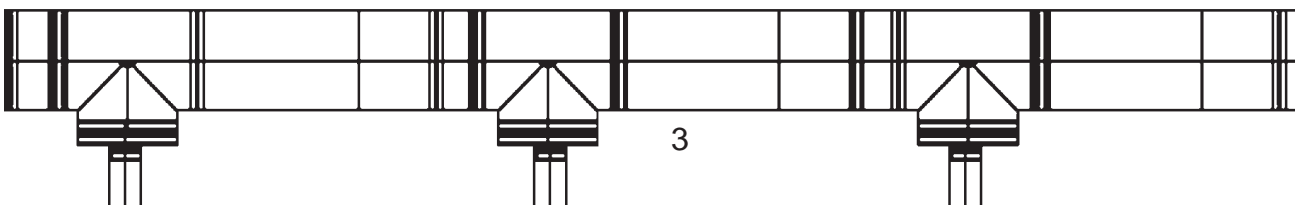
### FasNSeal®W2 Features Built-in Gaskets And Mechanical Locking Bands

The flue gas conduit of every vent length and component (inner tube) features a built-in gasket in its female-end to seal each joint. An integrated mechanical locking band is factory-built into the jacket (outer tube) of each vent length and component (**Pat #6,026,803 addtl. Patents pending**). FasNSeal®W2 parts are simply pushed together until fully seated. This renders the joints air and water-tight. By tightening their integrated mechanical locking band, parts are fastened together in seconds. FasNSeal®W2 can be taken apart and reassembled in minutes, making inspection, maintenance or re-routing of FasNSeal®W2 systems a breeze. **Adjustable vent lengths** featured in our Wall Thimbles allow for built-in horizontal adjustability without the need for cutting pipe. Our standard Adjustable Vent Length allows 4" to 12" of vertical adjustment, making pitching FasNSeal®W2 to properly drain condensate simple. Connecting FasNSeal®W2 to a heater is done efficiently with one of our many Adaptors approved by heating appliance manufacturers. Heating equipment can be fired up immediately upon completing a FasNSeal®W2 installation, as no cure time or cleanup is required. **PTS listened to the installer and came up with the perfect way to join FasNSeal® parts.** No cutting, no exterior clamps, no joints to wipe with alcohol, no rings, no tabs no mess to clean.

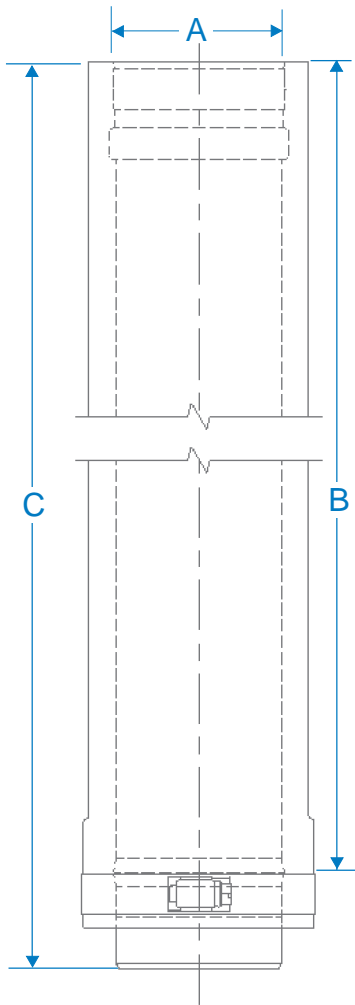


### FasNSeal®W2 Technical Support Is Second To None

Submit your specifications on a submittal request form along with your layout and PTS will supply comprehensive submittal drawings and a complete bill of materials within 48 business hours. Unless your specs are changed more than once, this service is provided free of charge. For technical or marketing information visit our website at [protechinfo.com](http://protechinfo.com). You can contact our technical department at [support@protechinfo.com](mailto:support@protechinfo.com) or call 1.800.766.3473 should you prefer personal technical support.



GENERAL VENTING



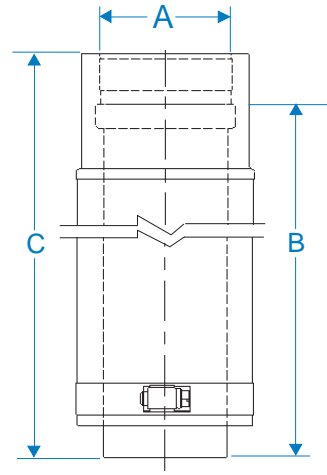
FasNSeal Single Wall & FasNSeal®W2 Double Wall are interchangeable

FasNSeal®W2 Vent Length					
A Vent Dia.	B Eff. Lgth	C	D	Product Number	Part Number
3	4.3	6.0		100001	W2-603
	10.3	12.0		100015	W2-1203
	16.3	18.0		100045	W2-1803
	22.3	24.0		100060	W2-2403
	34.3	36.0		100075	W2-3603
4	4.3	6.0		100002	W2-604
	10.3	12.0		100016	W2-1204
	16.3	18.0		100046	W2-1804
	22.3	24.0		100061	W2-2404
	34.3	36.0		100076	W2-3604
5	4.3	6.0		100003	W2-605
	10.3	12.0		100017	W2-1205
	16.3	18.0		100047	W2-1805
	22.3	24.0		100062	W2-2405
	34.3	36.0		100077	W2-3605
6	4.3	6.0		100004	W2-606
	10.3	12.0		100018	W2-1206
	16.3	18.0		100048	W2-1806
	22.3	24.0		100063	W2-2406
	34.3	36.0		100078	W2-3606
7	4.3	6.0		100005	W2-607
	10.3	12.0		100019	W2-1207
	16.3	18.0		100049	W2-1807
	22.3	24.0		100064	W2-2407
	34.3	36.0		100079	W2-3607
8	4.3	6.0		100006	W2-608
	10.3	12.0		100020	W2-1208
	16.3	18.0		100050	W2-1808
	22.3	24.0		100065	W2-2408
	34.3	36.0		100080	W2-3608
9	4.3	6.0		100007	W2-609
	10.3	12.0		100021	W2-1209
	16.3	18.0		100051	W2-1809
	22.3	24.0		100066	W2-2409
	34.3	36.0		100081	W2-3609
10	4.3	6.0		100008	W2-610
	10.3	12.0		100022	W2-1210
	16.3	18.0		100052	W2-1810
	22.3	24.0		100067	W2-2410
	34.3	36.0		100082	W2-3610
12	4.3	6.0		100009	W2-612
	10.3	12.0		100023	W2-1212
	16.3	18.0		100053	W2-1812
	22.3	24.0		100068	W2-2412
	34.3	36.0		100083	W2-3612
14	4.3	6.0		100010	W2-614
	10.3	12.0		100024	W2-1214
	16.3	18.0		100054	W2-1814
	22.3	24.0		100069	W2-2414
	34.3	36.0		100084	W2-3614
16	4.3	6.0		100011	W2-616
	10.3	12.0		100025	W2-1216
	16.3	18.0		100055	W2-1816
	22.3	24.0		100070	W2-2416
	34.3	36.0		100085	W2-3616

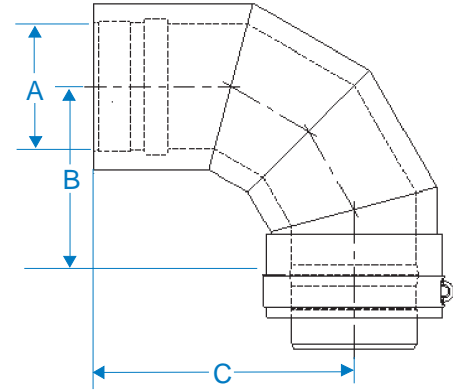




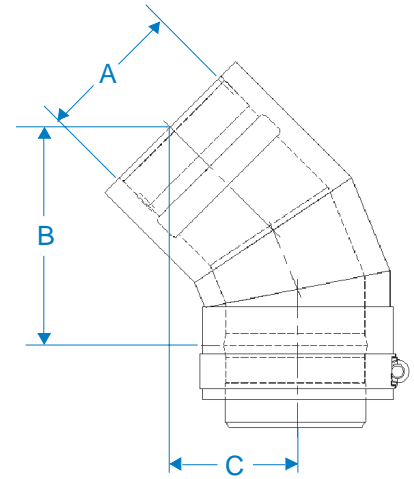
FasNSeal®W2 Adjustable Vent Length					
A	B	C	D	Product Number	Part Number
Vent Dia.	Eff. Lgth				
3	2.0-14.0	18.0		100250	W2-AVL3
4	2.0-14.0	18.0		100251	W2-AVL4
5	2.0-14.0	18.0		100252	W2-AVL5
6	2.0-14.0	18.0		100253	W2-AVL6
7	2.0-14.0	18.0		100254	W2-AVL8
8	2.0-14.0	18.0		100255	W2-AVL8
9	2.0-14.0	18.0		100256	W2-AVL9
10	2.0-14.0	18.0		100257	W2-AVL10
12	2.0-14.0	18.0		100258	W2-AVL12
14	2.0-14.0	18.0		100259	W2-AVL14
16	2.0-14.0	18.0		100260	W2-AVL16



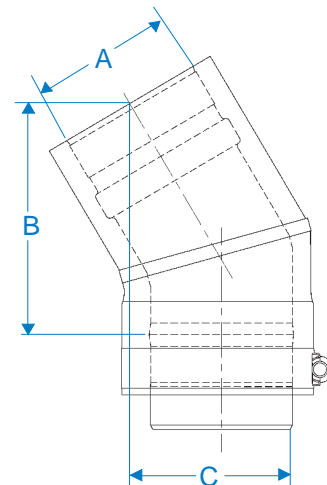
FasNSeal®W2 90 Degree Elbow					
A	B	C	D	Product Number	Part Number
Vent Dia.	Eff. Lgth				
3	3.9	5.9		100160	W2-9003
4	4.4	6.4		100161	W2-9004
5	4.9	6.9		100162	W2-9005
6	5.4	7.4		100163	W2-9006
7	5.9	7.9		100164	W2-9007
8	6.4	8.4		100165	W2-9008
9	6.9	8.9		100166	W2-9009
10	7.4	9.4		100167	W2-9010
12	8.4	10.4		100168	W2-9012
14	9.4	11.4		100169	W2-9014
16	10.1	12.4		100170	W2-9016



FasNSeal®W2 45 Degree Elbow					
A	B	C	D	Product Number	Part Number
Vent Dia.	Eff. Lgth				
3	5.2	3.0		100130	W2-4503
4	5.6	3.1		100131	W2-4504
5	6.0	3.2		100132	W2-4505
6	6.3	3.4		100133	W2-4506
7	6.7	3.5		100134	W2-4507
8	7.0	3.7		100135	W2-4508
9	7.4	3.8		100136	W2-4509
10	7.7	4.0		100137	W2-4510
12	8.4	4.3		100138	W2-4512
14	9.1	4.7		100139	W2-4514
16	9.8	4.9		100140	W2-4516

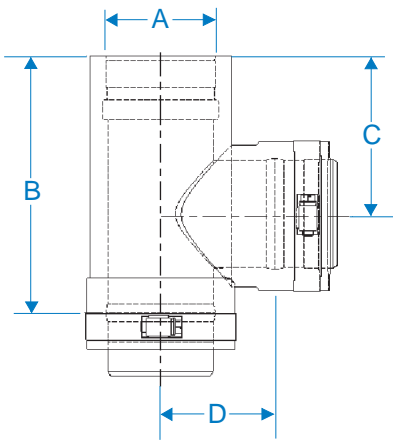


FasNSeal®W2 30 Degree Elbow					
A	B	C	D	Product Number	Part Number
Vent Dia.	Eff. Lgth				
3	4.9	1.8		100650	W2-3003
4	5.2	1.9		100651	W2-3004
5	5.4	2.0		100652	W2-3005
6	5.7	2.0		100653	W2-3006
7	5.9	2.1		100654	W2-3007
8	6.1	2.2		100655	W2-3008
9	6.4	2.2		100656	W2-3009
10	6.7	2.3		100657	W2-3010
11	7.2	2.4		100658	W2-3012
14	7.7	2.6		100659	W2-3014
16	8.2	2.7		100660	W2-3016

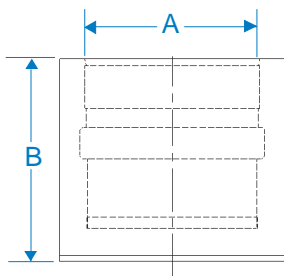


GENERAL VENTING

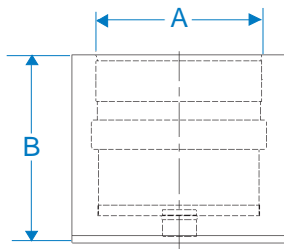
GENERAL VENTING



FasNSeal®W2 Tee					
A	B	C	D	Product Number	Part Number
Vent Dia.	Eff. Lgth				
3	7.3	4.5	3.0	100175	W2-T3
4	8.3	4.8	3.5	100176	W2-T4
5	9.3	5.3	4.0	100177	W2-T5
6	10.3	5.8	4.5	100178	W2-T6
7	11.3	6.3	5.0	100179	W2-T7
8	12.3	6.8	5.5	100180	W2-T8
9	13.3	7.3	6.0	100181	W2-T9
10	14.3	7.8	6.5	100182	W2-T10
12	16.3	9.0	7.0	100183	W2-T12
14	20.3	11.0	8.5	100184	W2-T14
16	22.3	12.0	9.5	100185	W2-T16



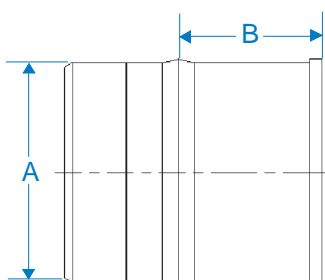
FasNSeal®W2 Tee Cap					
A	B	C	D	Product Number	Part Number
Vent Dia.	Eff. Lgth				
3	3.5			100205	W2-TC3
4	3.5			100206	W2-TC4
5	3.5			100207	W2-TC5
6	3.5			100208	W2-TC6
7	3.5			100209	W2-TC7
8	3.5			100210	W2-TC8
9	3.5			100211	W2-TC9
10	3.5			100212	W2-TC10
12	3.5			100213	W2-TC12
14	3.5			100214	W2-TC14
16	3.5			100215	W2-TC16



FasNSeal®W2 Drain Fitting					
A	B	C	D	Product Number	Part Number
Vent Dia.	Eff. Lgth				
3	3.5			100220	W2-DF3
4	3.5			100221	W2-DF4
5	3.5			100222	W2-DF5
6	3.5			100223	W2-DF6
7	3.5			100224	W2-DF7
8	3.5			100225	W2-DF8
9	3.5			100226	W2-DF9
10	3.5			100227	W2-DF10
12	3.5			100228	W2-DF12
14	3.5			100229	W2-DF14
16	3.5			100230	W2-DF16



HORIZONTAL VENTING



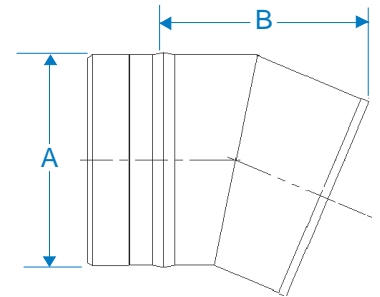
**FasNSeal Single Wall & FasNSeal®W2 Double Wall are interchangeable**

FasNSeal® Bird Screen					
A	B	C	D	Product Number	Part Number
Vent Dia.	Eff. Lgth				
3	2.0			300186	FSBS3
4	2.0			300187	FSBS4

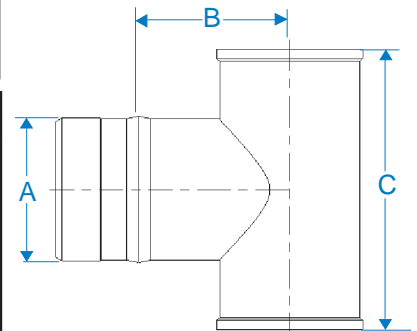




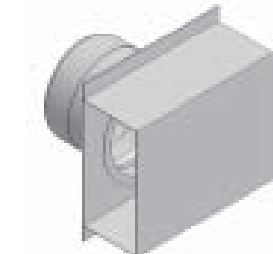
FasNSeal® 23 Degree Bird Screen					
A	B	C	D	Product Number	Part Number
Vent Dia.	Eff. Lgth				
5	4.8			300188	FSBS5
6	5.6			300189	FSBS6
7	6.4			300190	FSBS7
8	7.1			300191	FSBS8
9	7.9			300192	FSBS9
10	8.7			300193	FSBS10
12	10.2			300194	FSBS12
14	11.7			300195	FSBS14
16	13.2			300196	FSBS16



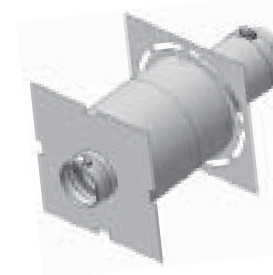
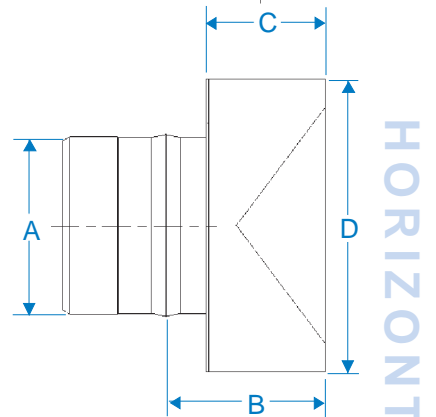
FasNSeal® Termination Tee					
A	B	C	D	Product Number	Part Number
Vent Dia.	Eff. Lgth				
3	3.0	6.0		300311	FSTT3
4	3.5	7.0		300312	FSTT4
5	4.0	8.0		300313	FSTT5
6	4.5	9.0		300314	FSTT6



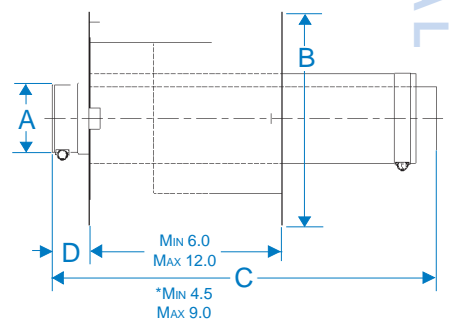
For technical or marketing information visit our website at [www.protechinfo.com](http://www.protechinfo.com). You can contact our technical department at [support@protechinfo.com](mailto:support@protechinfo.com) or call **1.800.766.3473** should you prefer personal technical support.



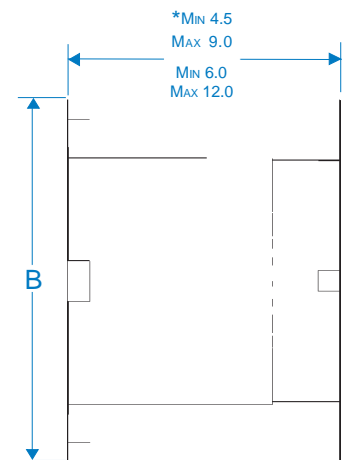
FasNSeal® Termination Box					
A	B	C	D	Product Number	Part Number
Vent Dia.	Eff. Lgth				
3	2.3	2.0	5.0	300500	FSTB3
4	2.3	2.0	6.0	300501	FSTB4

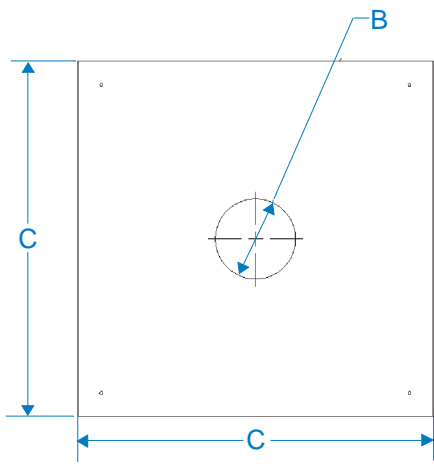


FasNSeal®W2 Wall Thimble with Adjustable Vent Length					
A	B	C	D	Product Number	Part Number
Vent Dia.					
3*	10.0	18.0	1.8	100280	W2-WT3
4*	11.0	18.0	1.8	100281	W2-WT4
5*	12.0	18.0	1.8	100282	W2-WT5
6	13.0	18.0	1.8	100283	W2-WT6
7	14.0	18.0	1.8	100284	W2-WT7
8	15.0	18.0	1.8	100285	W2-WT8
9	16.0	18.0	1.8	100286	W2-WT9
10	17.0	18.0	1.8	100287	W2-WT10
12	19.0	18.0	1.8	100289	W2-WT12
14	21.0	18.0	1.8	100290	W2-WT14
16	23.0	18.0	1.8	100291	W2-WT16

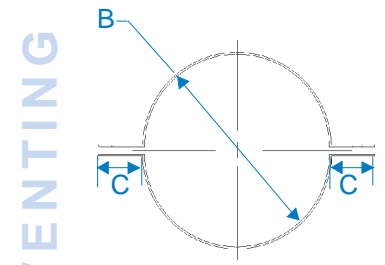
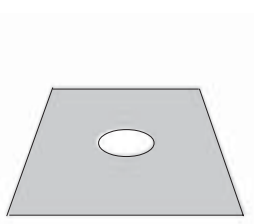


FasNSeal® Wall Pass Through					
Vent Dia.	B	C	D	Product Number	Part Number
3*	11.0			300601	FSWPT4
4*	11.0			300602	FSWPT5
5*	12.0			300603	FSWPT6
6	13.0			300604	FSWPT7
7	14.0			300605	FSWPT8
8	15.0			300606	FSWPT9
9	16.0			300607	FSWPT10

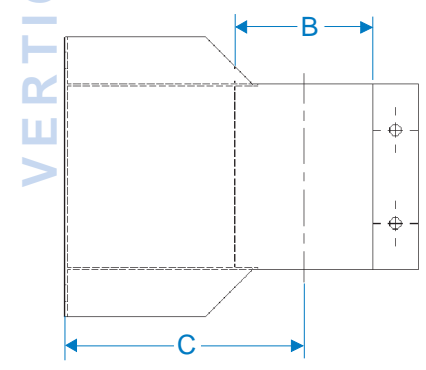




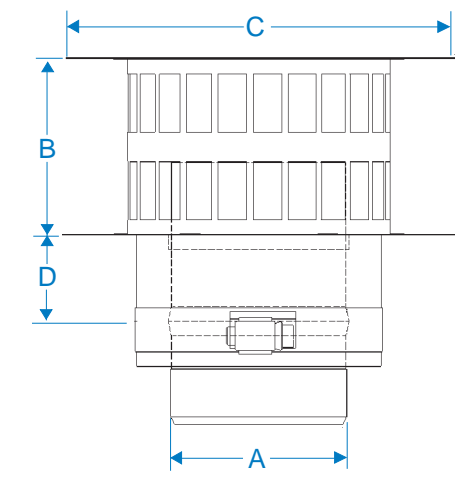
FasNSeal® Firestop/Flat Flashing					
A Vent Dia.	B	C	D	Product Number	Part Number
3	4.0	15.0		300296	FSFS4
4	5.0	17.0		300297	FSFS5
5	6.0	17.0		300298	FSFS6
6	7.0	19.0		300299	FSFS7
7	8.0	19.0		300300	FSFS8
8	9.0	22.0		300301	FSFS9
9	10.0	22.0		300302	FSFS10
10	11.0	23.0		300480	FSFS11
12	13.0	25.0		300481	FSFS13
14	15.0	27.0		300482	FSFS15
16	17.0	29.0		300483	FSFS17



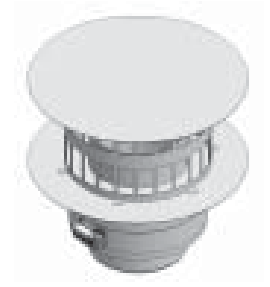
FasNSeal® Support Clamp					
A Vent Dia.	B	C	D	Product Number	Part Number
3	4.0	1.5		300361	FSCL4
4	5.0	1.5		300362	FSCL5
5	6.0	1.5		300363	FSCL6
6	7.0	1.5		300364	FSCL7
7	8.0	1.5		300365	FSCL8
8	9.0	1.5		300366	FSCL9
9	10.0	1.5		300367	FSCL10
10	11.0	1.5		300484	FSCL11
12	13.0	1.5		300485	FSCL13
14	15.0	1.5		300486	FSCL15
16	17.0	1.5		300487	FSCL17



FasNSeal® Wall Bracket					
A Vent Dia.	B	C	D	Product Number	Part Number
3	4.0	4.0		300431	FSWB4
4	5.0	4.5		300432	FSWB5
5	6.0	5.0		300433	FSWB6
6	7.0	5.5		300434	FSWB7
7	8.0	6.0		300435	FSWB8
8	9.0	6.5		300436	FSWB9
9	10.0	7.0		300437	FSWB10
10	11.0	7.5		300492	FSWB11
12	13.0	8.5		300493	FSWB13
14	15.0	9.5		300494	FSWB15
16	17.0	10.5		300495	FSWB17



FasNSeal® W2 Rain Cap					
A Vent Dia.	B	C	D	Product Number	Part Number
3	3.5	6.8	1.0	100325	W2-RC3
4	4.5	8.9	1.0	100326	W2-RC4
5	5.8	11.3	1.0	100327	W2-RC5
6	6.8	13.5	1.0	100328	W2-RC6
7	7.8	15.8	1.0	100329	W2-RC7
8	8.8	18.0	1.0	100330	W2-RC8
9	10.0	20.0	1.0	100331	W2-RC9
10	11.0	22.0	1.0	100332	W2-RC10
12	13.0	27.0	1.0	100333	W2-RC12
14	15.0	31.0	1.0	100334	W2-RC14
16	17.0	36.0	1.0	100335	W2-RC16



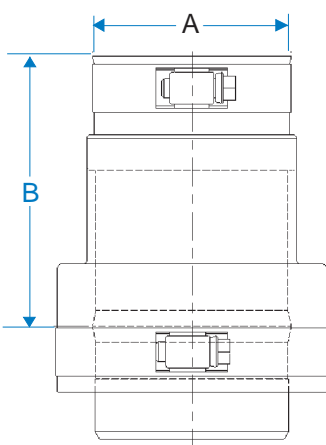
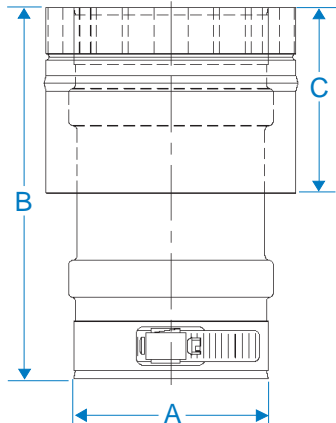
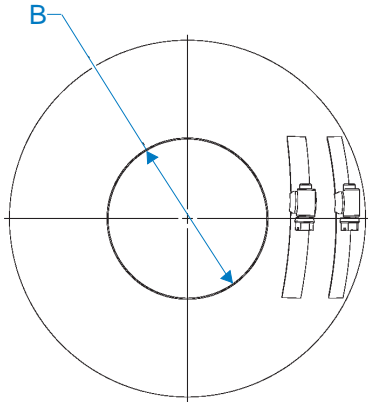
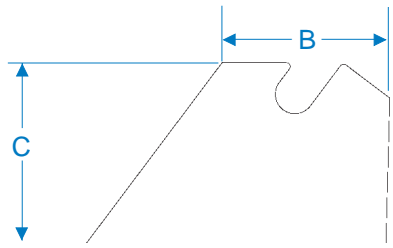
VERTICAL VENTING

FasNSeal® Variable Pitch Roof Flashing					
Vent Dia.	B	C	D	Product Number	Part Number
3	5.2	8.7		300922	FSVPF3
4	6.2	8.7		300923	FSVPF4
5	7.2	8.7		300924	FSVPF5
6	8.2	8.7		300925	FSVPF6
7	9.2	8.7		300926	FSVPF7
8	10.2	8.7		300927	FSVPF8
9	11.2	8.7		300928	FSVPF9
10	12.2	8.7		300929	FSVPF10
12	14.2	8.7		300930	FSVPF12
14	16.2	8.7		300931	FSVPF14
16	18.2	8.7		300932	FSVPF16

FasNSeal® Storm Collar					
Vent Dia.	B	C	D	Product Number	Part Number
3	4.0			300945	FSC4
4	5.0			300946	FSC5
5	6.0			300947	FSC6
6	7.0			300948	FSC7
7	8.0			300949	FSC8
8	9.0			300950	FSC9
9	10.0			300952	FSC10
10	11.0			300970	FSC11
12	13.0			300971	FSC13
14	15.0			300972	FSC15
16	17.0			300973	FSC17

FasNSeal® W2 Universal Appliance Adapter						
Vent Dia.	A	B	C	D	Product Number	Part Number
3		6.0	3.0		100340	W2-AA3
4		6.0	3.0		100341	W2-AA4
5		6.0	3.0		100557	W2-AA5
6		6.0	3.0		100412	W2-AA6
7		6.0	3.0		100413	W2-AA7
8		6.0	3.0		100414	W2-AA8
9		6.0	3.0		100415	W2-AA9
10		6.0	3.0		100416	W2-AA10
12		6.0	3.0		100417	W2-AA12
14		6.0	3.0		100418	W2-AA14
16		6.0	3.0		100419	W2-AA16

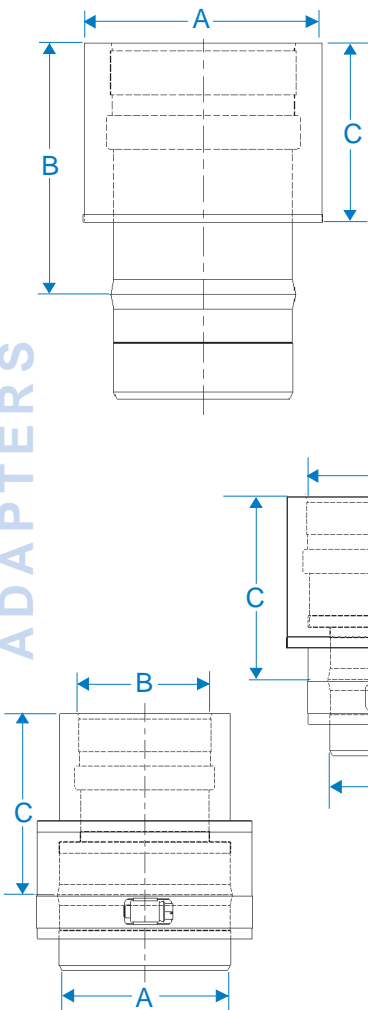
FasNSeal® W2 to FasNSeal® Single Wall Adapter						
Vent Dia.	A	B	C	D	Product Number	Part Number
3		4.0			100193	FSA-DWSW3
4		4.0			100194	FSA-DWSW4
5		4.0			100195	FSA-DWSW5
6		4.0			100196	FSA-DWSW6
7		4.0			100197	FSA-DWSW7
8		4.0			100198	FSA-DWSW8
9		4.0			100199	FSA-DWSW9
10		4.0			100200	FSA-DWSW10
12		4.0			100201	FSA-DWSW12
14		4.0			100202	FSA-DWSW14
16		4.0			100203	FSA-DWSW16



VERTICAL VENTING

ADAPTERS

ADAPTERS



FasNSeal® Single Wall to FasNSeal®W2 Adapter					
A	B	C	D	Product Number	Part Number
Vent Dia.	Eff. Lgth				
3	4.0	3.0		100141	FSA-SWDW3
4	4.0	3.0		100142	FSA-SWDW4
5	4.0	3.0		100143	FSA-SWDW5
6	4.0	3.0		100144	FSA-SWDW6
7	4.0	3.0		100145	FSA-SWDW7
8	4.0	3.0		100146	FSA-SWDW8
9	4.0	3.0		100147	FSA-SWDW9
10	4.0	3.0		100148	FSA-SWDW10
12	4.0	3.0		100149	FSA-SWDW12
14	4.0	3.0		100150	FSA-SWDW14
16	4.0	3.0		100151	FSA-SWDW16

**For a complete list of Adapters call  
1.800.766.3473  
Ask for Literature Number 1202**

FasNSeal®W2 Increaser					
A	B	C	D	Product Number	Part Number
Vent Dia.	Eff. Lgth				
4	5.0	4.3		100381	W2-45I

Increasers can be ordered to adjoin any size combination of pieces.

FasNSeal®W2 Reducer					
A	B	C	D	Product Number	Part Number
Vent Dia.	Eff. Lgth				
7	5.0	4.3		100638	W2-75R

Reducers can be ordered to adjoin any size combination of pieces.



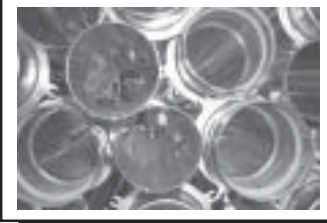
**Marketing Support**

Our Marketing Department is here to help all of us succeed. We have a large selection of literature, direct mail postcards, ad slicks, promotional t-shirts, hats and much more. Take advantage of our co-op advertising program and we'll even help you design the ad, target a direct mail project or come up with creative sales promotions. Call us anytime to request free literature and discuss marketing opportunities available to you.

**Website Convenience**

The PTS website offers information about products that directly effect consumer safety and efficient performance of heating equipment. It is complete with a literature library, allowing the download of brochures, technical specifications and installation instructions.

Users should be aware that all information is copyrighted and may not be reproduced or altered without written consent from PTS.



**Training**

PTS offers a variety of technical and sales training opportunities specializing in vent design for Category I, II, III and IV heating appliances;

codes and standards. We will be happy to provide training seminars.

**Customer Support**

PTS prides itself on providing the best customer service and marketing support in the industry. Our Customer Support Team is available to answer technical questions, set up training seminars, request literature and assist with marketing plans. Please call us **Monday-Friday at 1.800.766.3473** or e-mail us at **support@protechinfo.com**.



Additional products from  
**PTSE** PROTECH SYSTEMS, INC.  
LEADERS IN VENTING TECHNOLOGY

# FasNSeal®

**Silicone Free AL29-4C®  
Vent System for Category II, III & IV  
Heating Appliances**

- 3" - 16" Diameters
- TIG-welded butt seam
- Built in gaskets & locking bands
- Close Clearance to Combustibles
- Engineering Services
- Precision fit & finish
- Proven track record
- Installs in half the time
- Also available in double wall

# VENTINOX® *Chimney Lining System*

Trusted in thousands of American homes since 1982, VENTINOX® features the only WELDED design and is engineered with precision.

The only time tested flexible stainless steel chimney liner, VENTINOX® provides safe, reliable venting for gas, oil & wood.

Available in 3" through 12" Diameters  
Pop-rivet free components.

# FasNSeal®W2 Special Gas Vent

The Innovative AL 29-4C Double Wall Vent System

The First **SILICONE FREE** Vent System for Category II, III, & IV Heating Appliances

Engineering Services are provided. Call **1.800.766.3473** or [engineering@protechinfo.com](mailto:engineering@protechinfo.com)

## FEATURES

## BENEFITS

- **AL29-4C® superferritic stainless steel**

- Recognized by the AGA as the material of choice.
- Excellent corrosion resistance and structural strength.

- **Precision TIG-welded butt seam**

- Seams on vent lengths & components are smooth both inside and out. Gas & water-tight.

- **Factory built-in, replaceable gaskets**

- System can be taken apart & reassembled quickly.
- No silicone, no cure time, no mess.
- Installs in half the time.

- **Factory built-in locking band**

- Line up seams to line up clamps for easy installation.
- No cumbersome tabs.
- No external clamps to lose.

- **Wall Thimble with built-in Adjustable Vent Length**

- Wall Thimble allows for built-in horizontal adjustability.
- No need to cut pipe.

- **Standard Adjustable Vent Length**

- Provides 2" -14" of vertical or horizontal adjustment for easy system pitching.

- **Proven track record**

- Tested and listed by Underwriters Laboratories, Inc. to UL 1738 & ULC-S636.
- Tested and approved by heating equipment manufacturers.
- 15 year warranty.



PARTS LIST		
ITEM	QTY	PART #
1	1	300558
2	1	100223
3	1	100178
4	1	100078
5	5	100063
6	1	100028
7	1	100306
8	1	300373
9	1	300386

TYPICAL OF A SYSTEM ELEVATION VIEW

SAMPLE 11/10/2005 NTS	1 of 3 DRAWN BY: D. Gass	PROJECT NAME  <b>YOUR PROJECT</b>	PROTECH SYSTEMS, INC. 400 South Pearl St. Albany, NY 12202 1.800.766.3473 www.protechinfo.com	GENERAL NOTES 1. TYPICAL OF (2) SYSTEMS 2. INSTALL A WALL BRACKET AFTER EVERY TWELVE (12) FEET OF VERTICAL RUN 3. USE NON-COMBUSTIBLE SUPPORT MATERIALS TO SUPPORT THE VENT SYSTEM EVERY SIX (6) FEET 4. REFER TO THE FasNSeal® INSTALLATION INSTRUCTIONS FOR ADDITIONAL REQUIREMENTS
-----------------------------	--------------------------------	---	---	---

This is a sample submittal drawing. The actual layout, parts list, and dimensions will vary depending on the requirements of your specific project.

**Available in 3" - 16" Diameters In Single & Double Wall**

**FasNSeal®W2 is a Heating Contractor's Dream Come True**

Simply slide **FasNSeal®W2** parts together, tighten their FasClamps and fire up the appliance immediately. You get a clean and professional job that is done NOW!



**PROTECH SYSTEMS, INC.**  
LEADERS IN VENTING TECHNOLOGY

400 South Pearl Street • Albany, NY 12202

518.463.7284 • Fax: 518.463.5271

**1.800.766.3473**

sales@protechinfo.com • www.protechinfo.com