

NEW

FasNSeal® Vent Kits

REDUCE YOUR SKUs WITH OUR TIME-SAVING KITS!

VENT KIT FOR WALL MOUNTED BOILERS & WATER HEATERS REQUIRING A 90 DEGREE BIRD SCREEN TERMINATION (see Lit. #1207 for details)

Kits are compatible with most **Paloma, Rheem, Ruud & Wai Wela** wall mounted water heaters.

Vent Diam.	Product Number	Part Number
3"	303300	FSWMKEB3
4"	300864	FSWMKE4

Each kit includes:

90 Degree Bird Screen

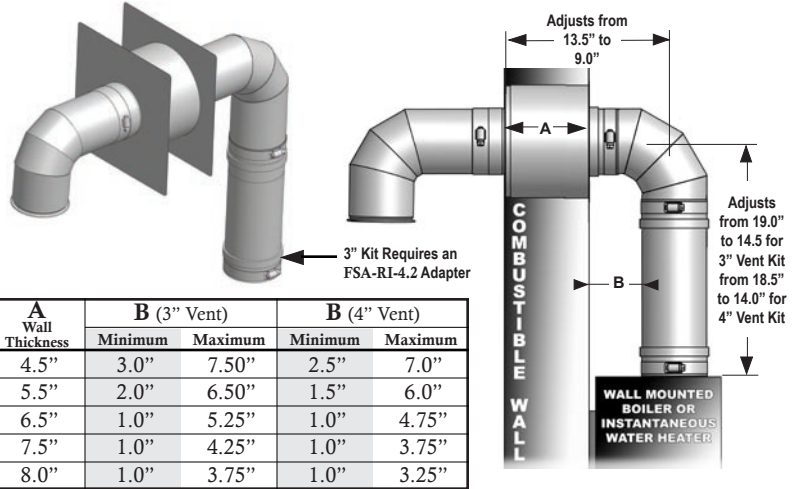
Wall Thimble • Adjustable Elbow

4" kit includes adapter FSAAU4

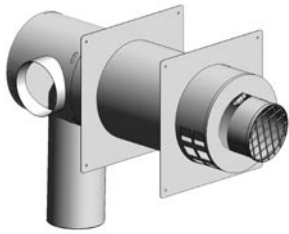
3" kit requires adapter FSA-RI-4.2 (not included)

ProTech offers adapters to fit most manufacturers' hardware.

Please contact your supplier to ensure you purchase the correct adapter.

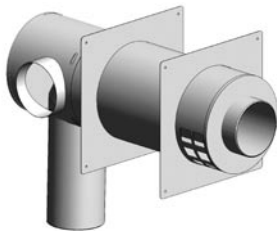


SEALED COMBUSTION DIRECT VENT PASS THROUGH KIT FOR WALL MOUNTED BOILERS & WATER HEATERS



FSDVPTB4

Includes Direct Vent Pass Through and Bird Screen



FSDVPT4

Includes Only Direct Vent Pass Through

FSDVPTK4

Kit includes:

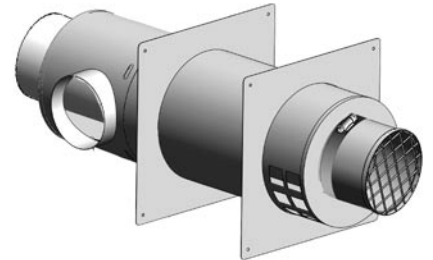
- Bird Screen
- Direct Vent Pass Through

- Exterior & Interior Mounting Plate
- 4" Appliance Adapter FSAAU4
- 3-foot Flexible Aluminum Duct with Two Clamps

ProTech offers adapters to fit most manufacturers' hardware. Please contact your supplier to ensure you purchase the correct adapter.

Vent Diam.	Product Number	Part Number
4"	303261	FSDVPTB4
4"	303262	FSDVPT4
4"	303260	FSDVPTK4

SEALED COMBUSTION DIRECT VENT PASS THROUGH KIT FOR REMOTE STANDING BOILERS & WATER HEATERS



FSDVFT

Includes Direct Vent Pass Through and Bird Screen

Vent Diam.	4"
Product Number	303259
Part Number	FSDVFT4

FasNSeal® Boot Tee				
Vent Diameter	Effective Length (V)	Effective Length (H)	Product Number	Part Number
5"	12.5"	8.0"	301030	FSBT5
6"	13.5"	8.5"	301031	FSBT6
7"	14.5"	9.0"	301032	FSBT7
8"	15.5"	9.5"	301033	FSBT8
9"	16.5"	10.0"	301034	FSBT9
10"	17.5"	10.5"	301035	FSBT10
12"	19.5"	11.5"	301036	FSBT12
14"	21.5"	12.5"	301037	FSBT14
16"	23.5"	13.5"	301038	FSBT16



FasNSeal® Branch Tee					
Vent Diameter	Effective Length (V)	Branch Diameter	Effective Length (H)	Product Number	Part Number
4"	8.2"	3"	3.5"	303004	FST4B3
5"	9.2"	3"	4.0"	303014	FST5B3
5"	9.2"	4"	4.0"	303015	FST5B4
6"	10.2"	3"	4.5"	301040	FST6B3
6"	10.2"	4"	4.5"	301041	FST6B4
6"	10.2"	5"	4.5"	300199	FST6B5
8"	12.2"	4"	5.5"	303047	FST8B4
8"	12.2"	5"	5.5"	303033	FST8B5

Additional sizes available, call (800) 766-3473 for more information

FSA-TTA Termination Adapter for Use with Takagi TK-TV03 and TK-TV05			
Vent Diameter	Effective Length	Product Number	Part Number
4"	4.0"	300647	FSA-TTA4



TEST PORT BUILT INTO A STANDARD VENT LENGTH, A UNIVERSAL APPLIANCE ADAPTER or A FasNSeal®W2 APPLIANCE ADAPTER (see Lit. #1232 for details) (patent pending)



Drawings at left reflect Standard Vent Design in Open Position (left) and Closed Position (right). Sliding mechanism covers hole. (patent pending)

FSTP is a single wall FasNSeal® Vent Length with a Test Port (patent pending)

Vent Diam.	Eff. Length	Product Number	Part Number
3"	9.75"	300540	FSTP03
4"	9.75"	300541	FSTP04
5"	9.75"	300542	FSTP05
6"	9.75"	300543	FSTP06
7"	9.75"	300544	FSTP07
8"	9.75"	300545	FSTP08
9"	9.75"	300546	FSTP09
10"	9.75"	300547	FSTP10
12"	9.75"	300548	FSTP12
14"	9.75"	300549	FSTP14
16"	9.75"	300550	FSTP16

FSAAUTP is a single wall Universal Appliance Adapter with a Test Port (patent pending)

Vent Diameter	Effective Length	Product Number	Part Number
3"	10.88"	303221	FSAAUTP03
4"	10.88"	303222	FSAAUTP04
5"	10.88"	303223	FSAAUTP05
6"	10.88"	303224	FSAAUTP06
7"	10.88"	303225	FSAAUTP07
8"	10.88"	303226	FSAAUTP08
9"	10.88"	303227	FSAAUTP09
10"	10.88"	303228	FSAAUTP10
12"	10.88"	303229	FSAAUTP12
14"	10.88"	303230	FSAAUTP14
16"	10.88"	303231	FSAAUTP16

W2-AATP is a W2 Appliance Adapter with a Test Port (patent pending)

Vent Diameter	Effective Length	Product Number	Part Number
3"	11.63"	100830	W2-AATP03
4"	11.63"	100831	W2-AATP04
5"	11.63"	100832	W2-AATP05
6"	11.63"	100833	W2-AATP06
7"	11.63"	100834	W2-AATP07
8"	11.63"	100835	W2-AATP08
9"	11.63"	100836	W2-AATP09
10"	11.63"	100837	W2-AATP10
12"	11.63"	100838	W2-AATP12
14"	11.63"	100839	W2-AATP14
16"	11.63"	100840	W2-AATP16